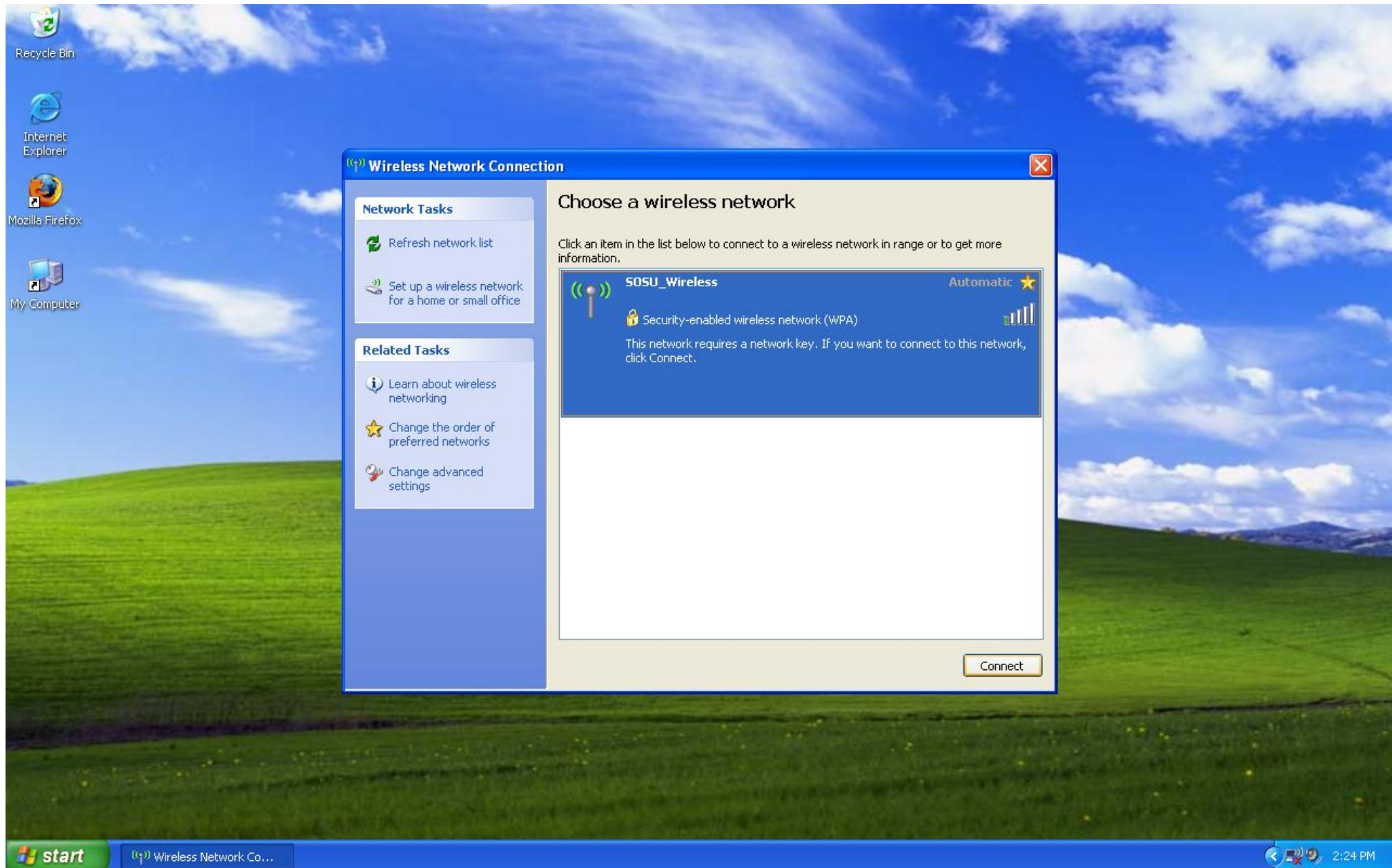


How to connect to the SOSU Wireless Access Points

Please follow the step by step procedure documented below. (These images are of Windows XP)

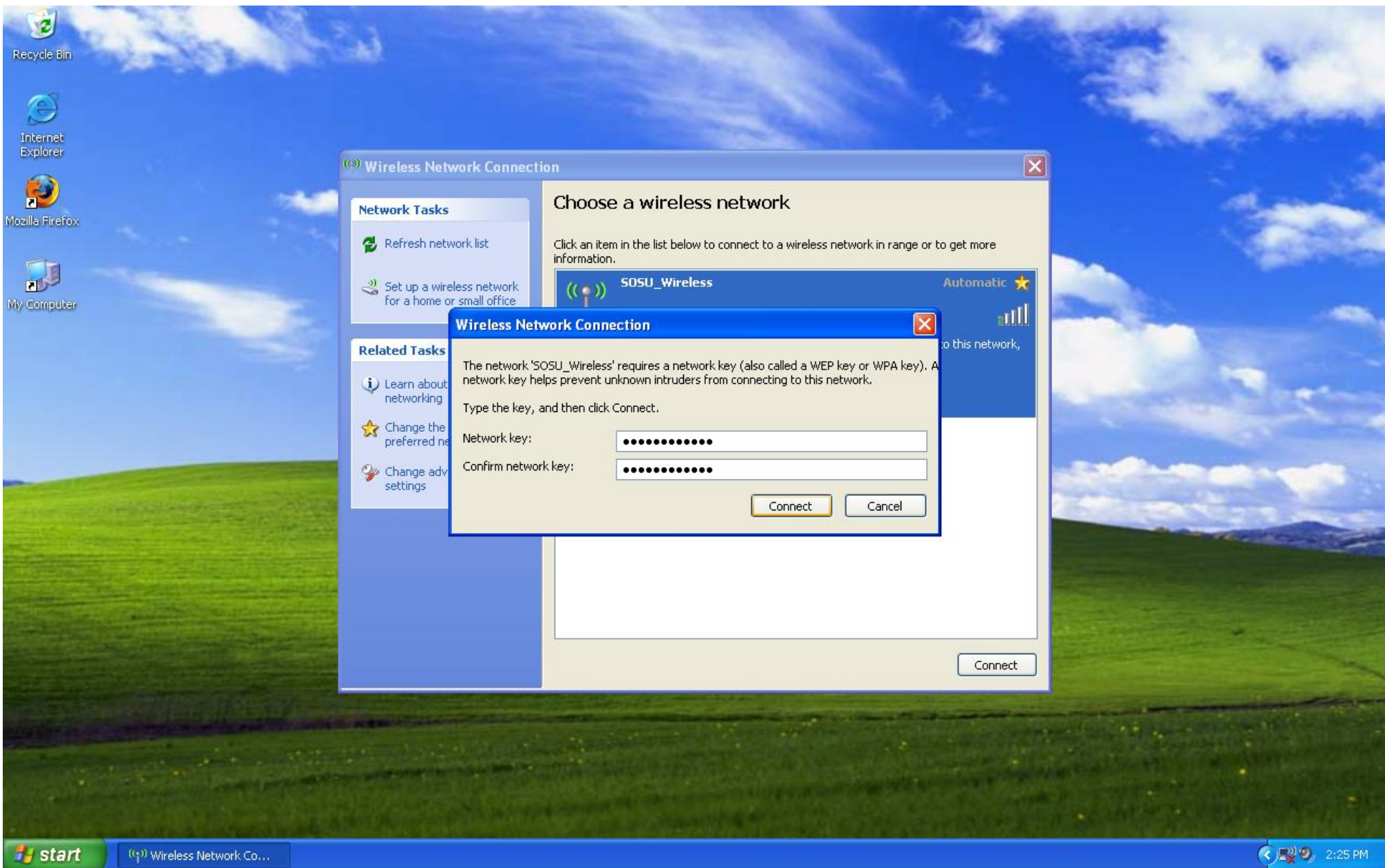


At your desktop, look for the wireless icon on the bottom right in your desktop tray. (This example is using Windows to manage the wireless network card, other software may be in use for your wireless management. The menus may look different but the process will be similar.)

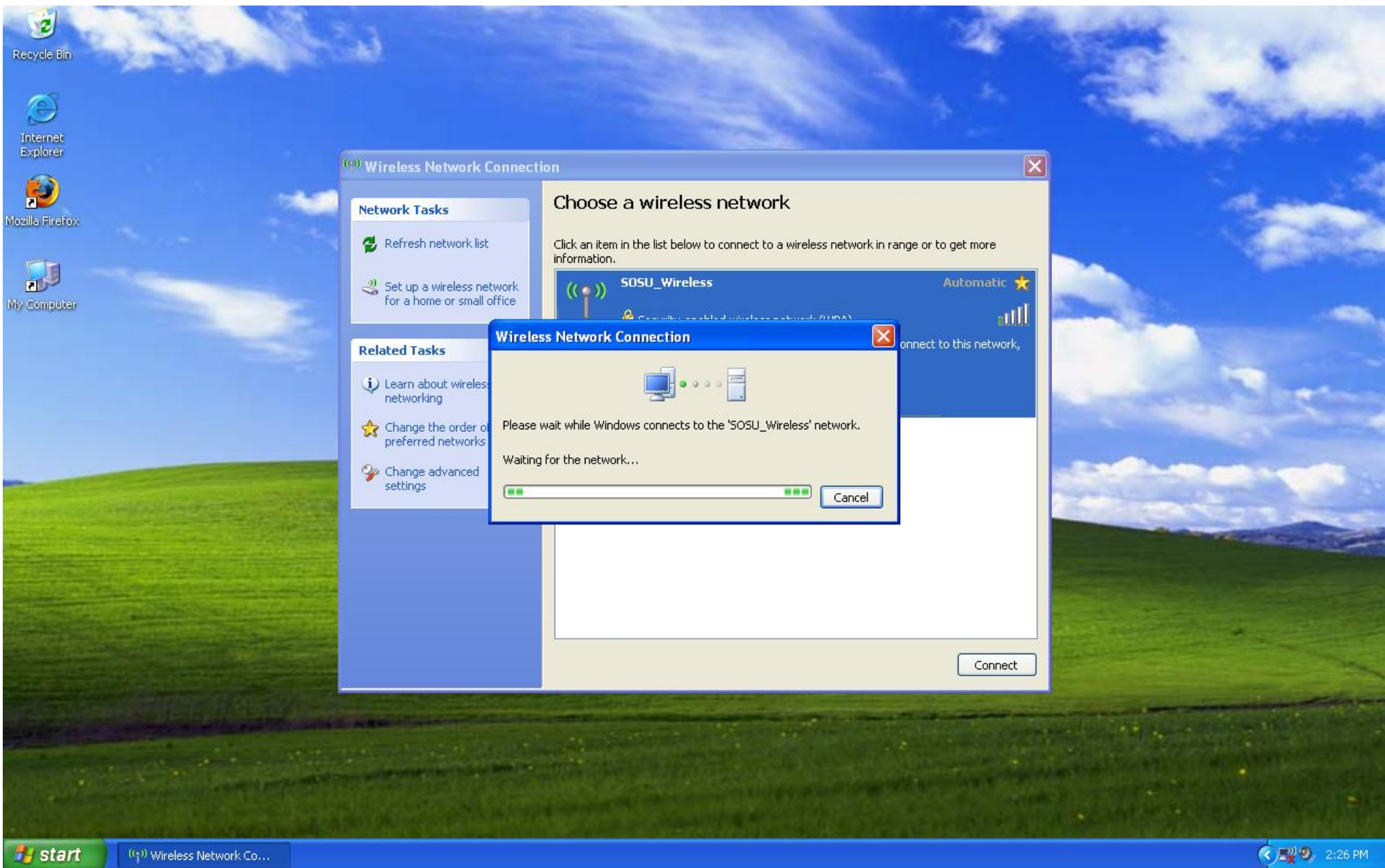


Double Click on your Wireless Network Icon to bring up a list of Wireless Networks within range

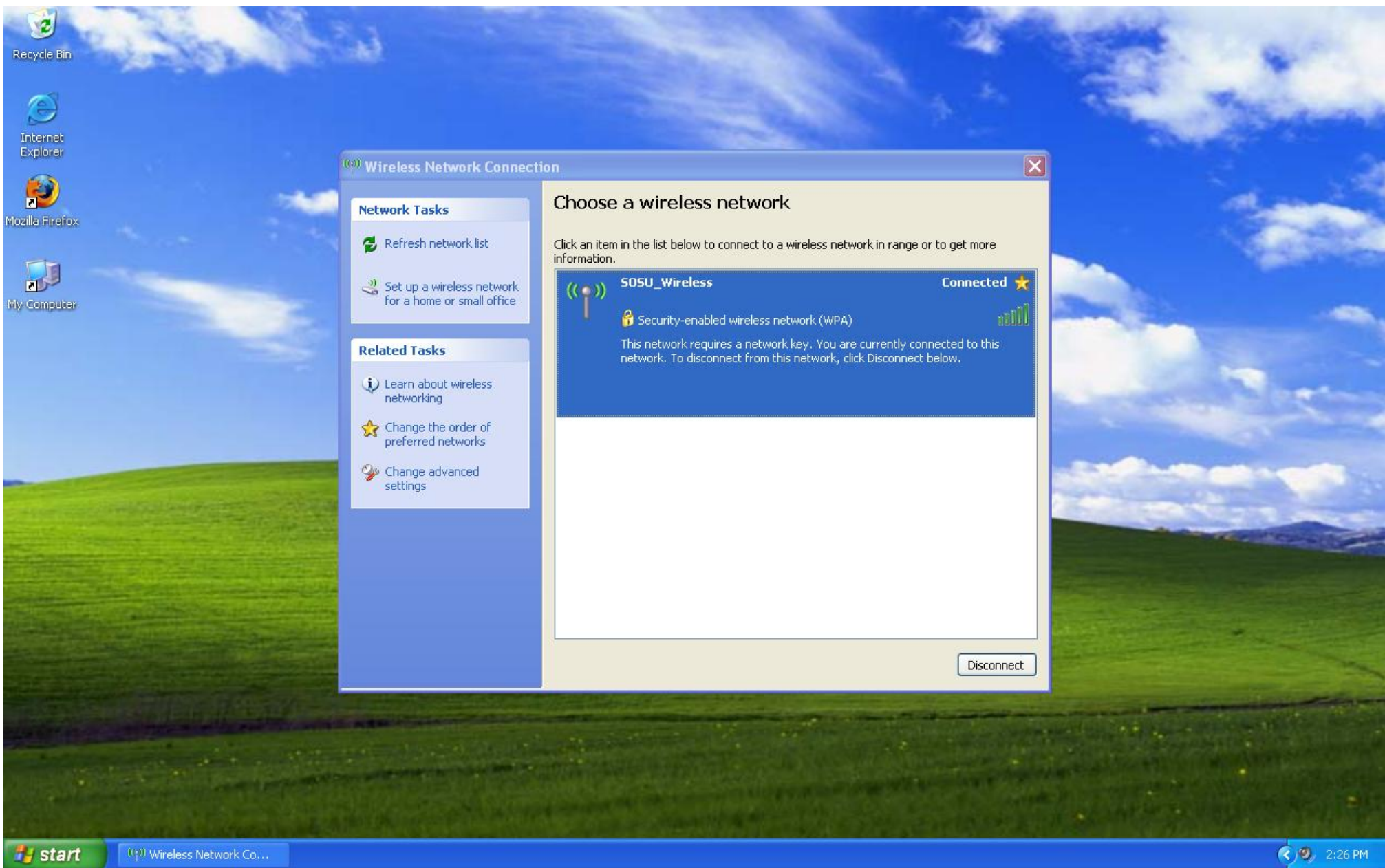
In the Wireless Network Connection window, you should see the "SOSU_Wireless" network listed. Double click on the SOSU_Wireless option to begin a connection.



A window will pop up asking for the network key for the "SOSU_Wireless" network. In the space provided, type in the key: **southeastern** in the Network key: space as well as the Confirm network key: space. Then click on the connect button.

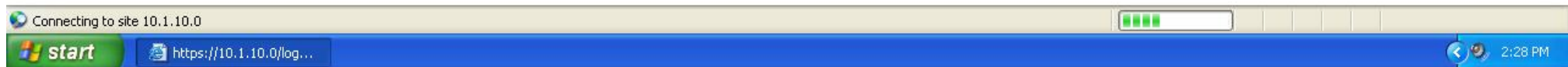
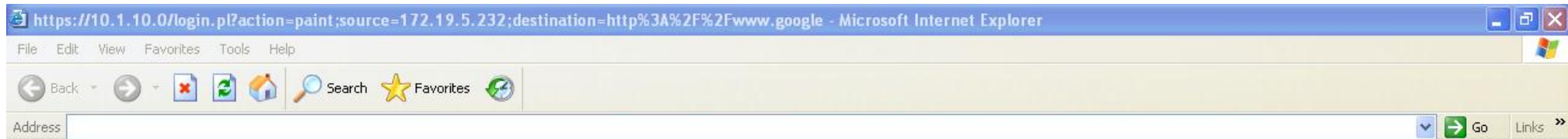


You will see another window displaying an attempt to connect.



Once you are connected, you will see Connected as the status in the Wireless Network Connection window. You are now connected to a Southeastern access point, but you will now need to authenticate yourself before you can utilize any network resources.

Now click on your browser icon, (Internet Explorer, Firefox, Opera, Safari, etc.)



Your homepage will be rerouted to the Wireless Login page for Southesatern. You will see a pop up security window asking if you wish to proceed. Click the yes button.

Guests
Your email address:

Log In

Registered Users
User Name

Password

Log In

Wednesday August 22,
2007

powered by
bluesocket
www.bluesocket.com
© 1999-2005 Bluesocket Inc.

Southeastern

Welcome to the Southeastern Oklahoma State University Wireless Network

Instructions for Login

For Faculty and Staff, in the Registered Users Window you will need to log in with your SOSU domain credentials just as you would for your computer and/or email.

For Students, in the Registered Users window you will need to log in with your STUDENTS domain credentials just as you would in any campus Computer Lab.

For Guests, in the Guests window you will need to provide a valid email account for network access.

(Guest access will receive limited bandwidth to provide the best possible connection for students and campus employees.)

Please be aware that by logging in, you are agreeing to the SOSU Computer Policies & Procedures outlined on the SOSU Website at:
<http://www.sosu.edu/information-technology/policies/computer-policies-and-procedures/>

You are now at the Southeastern Oklahoma State University Wireless Network login page. Please follow the onscreen instructions provided on the page.