

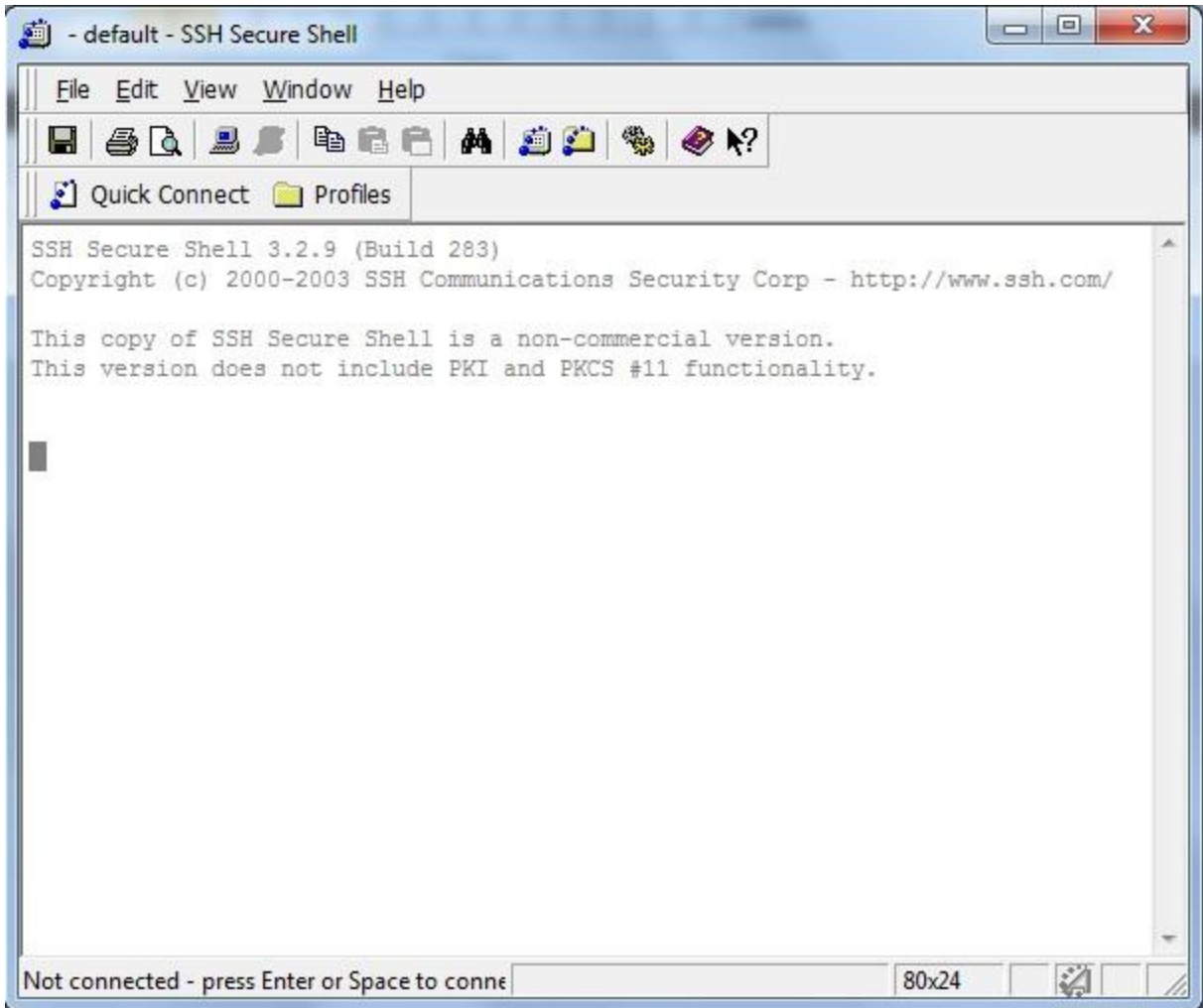
Logging onto *Kraken*. Draft version 2012.08.21

There are many ways to log onto Kraken, however, we highly suggest using SSH Secure Shell. (PuTTY is another). In fact, you can find SSH Secure Shell 3.2.9 install executable here:

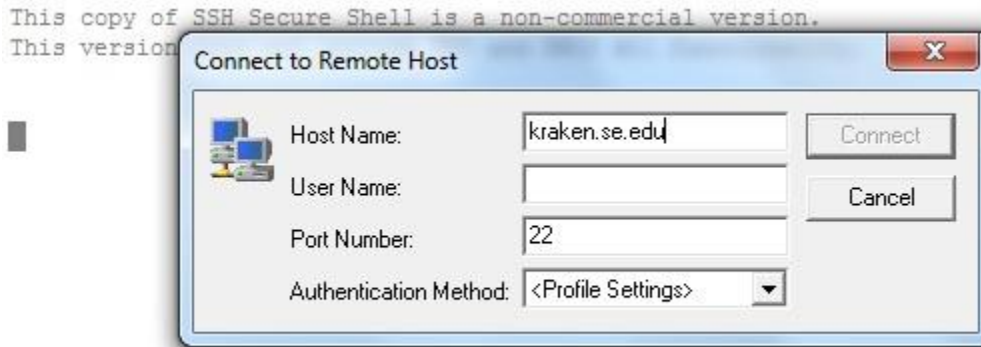
<http://carmine.se.edu/kfrinkle/teaching/current/CIS4973/docs/sshseureshellclient-3.2.9.exe>

The following directions will be based on SSH Secure Shell.

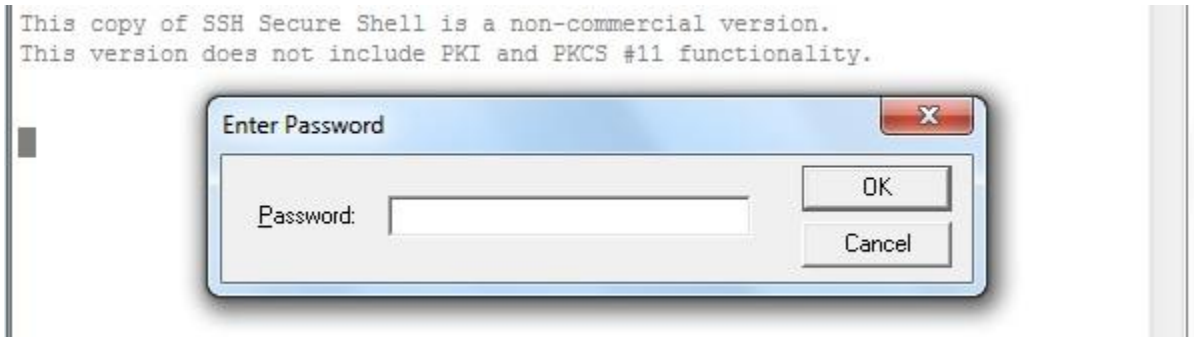
First, run the SSH Secure Shell Client. You will get a new window that looks like the following:



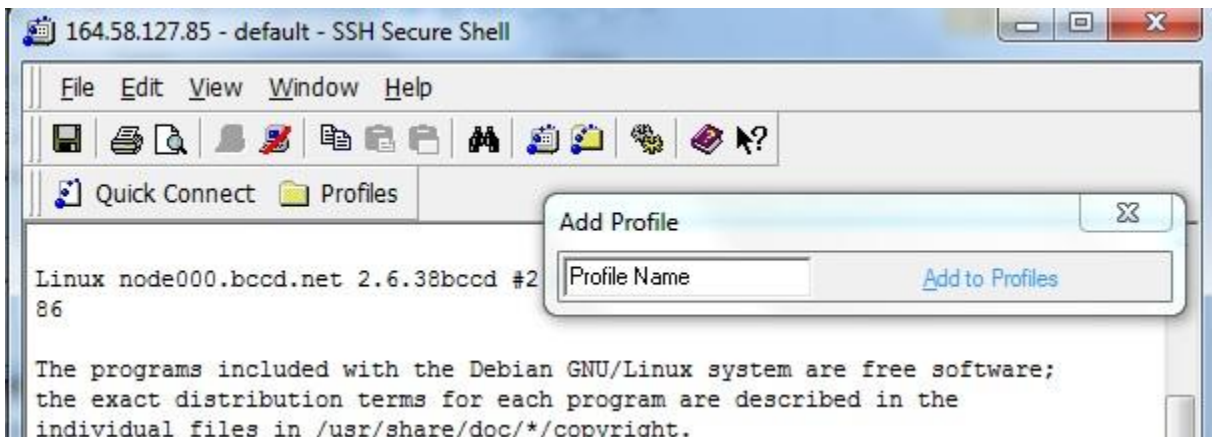
The first time you log onto Kraken, you simply click on the quick connect icon. A new window box will pop up.



In the host name, enter kraken.se.edu, and the username we provide you with. A new tab will pop up asking you for the password.

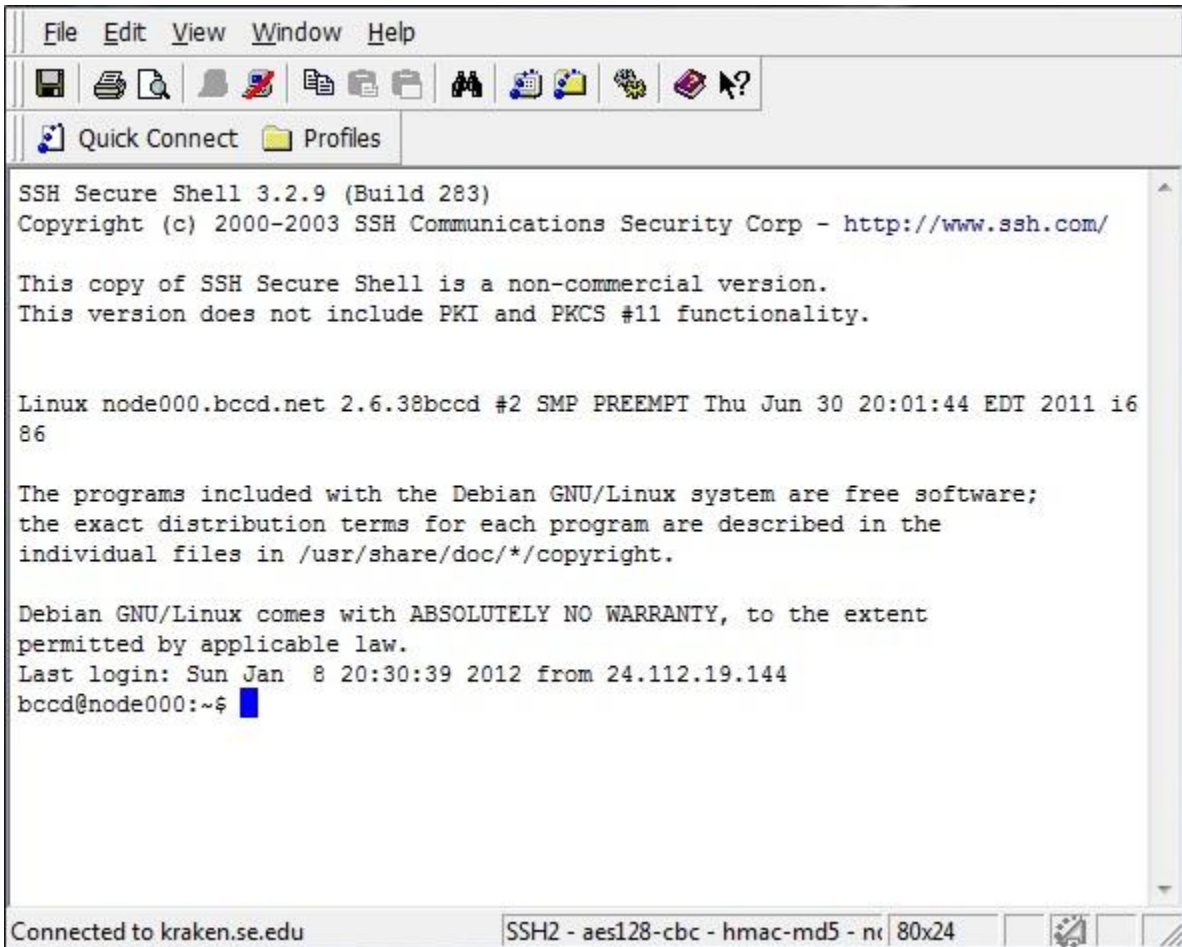


Once you enter the password we have given you, you should be logged in. If this is the first time, a little window titled “add profile” will pop up.



Feel free to enter in Kraken as the profile name, or whatever you want. Once this is done, if you wish to connect to Kraken in the future, you can select the connection from the Profiles icon next to the Quick Connect icon, in which case, only the password box will pop up.

If properly logged on, eventually there should be command prompt: `bccd@node000:~$`



You can also open up a nice GUI file browser too by clicking on the yellow file icon in the icon menu:



Once the file browser opens, you can drag and drop, copy + paste, and all the standard file operations you are used to in Windows.

