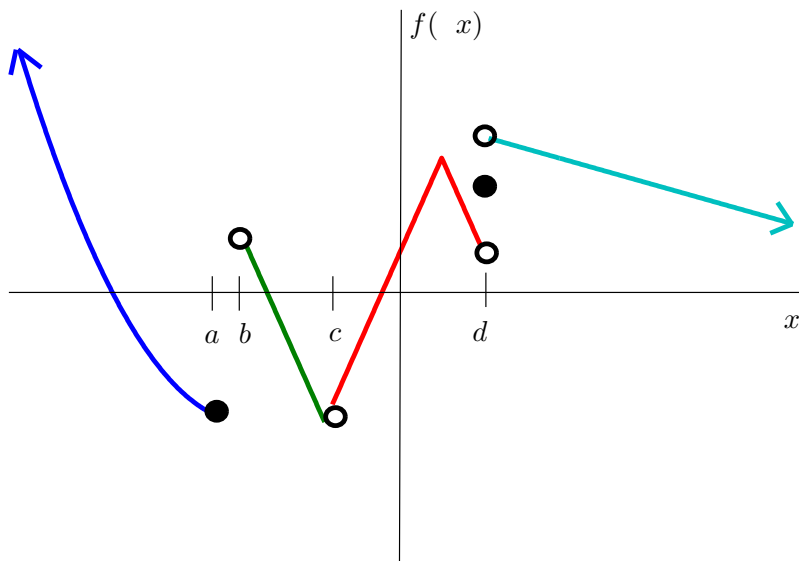


Math 2143 - Brief Calculus with Applications

Quiz #2 - 2008.01.31

Name: _____

Graph of the Piecewise Function $f(x)$



For each of the following expressions, state which points a , b , c , and d satisfy the following expressions.

1.

$$\lim_{x \rightarrow -^+} f(x) \text{ Does Not Exist}$$

2.

$$\lim_{x \rightarrow -^-} f(x) \text{ Does Not Exist}$$

3.

$$\lim_{x \rightarrow -} f(x) \text{ Does Not Exist}$$