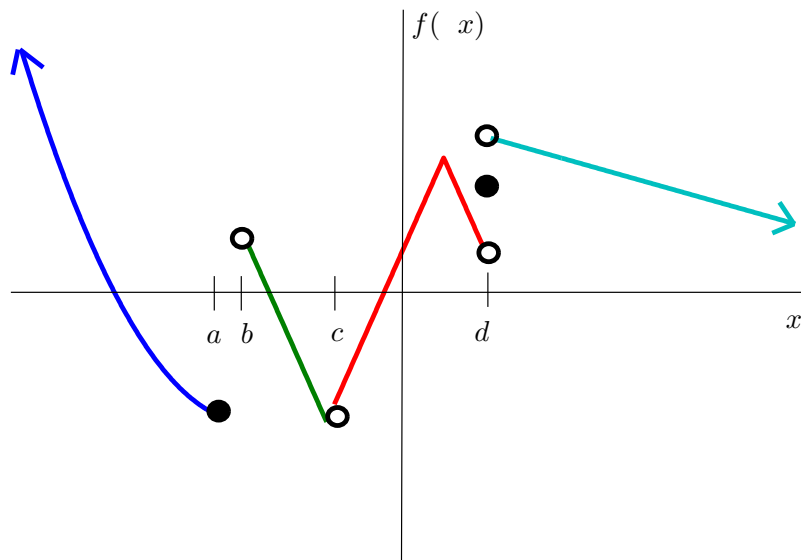


Math 2143 - Brief Calculus with Applications

Quiz #2 - 2008.01.31

Solutions

Graph of the Piecewise Function $f(x)$



For each of the following expressions, state which points a , b , c , and d satisfy the following expressions.

1.

$$\lim_{x \rightarrow _+} f(x) \text{ Does Not Exist}$$

$$x = a$$

2.

$$\lim_{x \rightarrow _-} f(x) \text{ Does Not Exist}$$

$$x = b$$

3.

$$\lim_{x \rightarrow _} f(x) \text{ Does Not Exist}$$

$$x = a, x = b, x = d$$