

# Math 1513 - College Algebra

Quiz #19 - 2018.11.05

Name: \_\_\_\_\_

A function  $F(x)$  with domain  $(-4, 4)$  and range  $(-\infty, \infty)$  is given in the graph below. On the same graph, sketch the inverse function  $F^{-1}(x)$  to  $F(x)$ . Be sure to include any possible asymptotes.

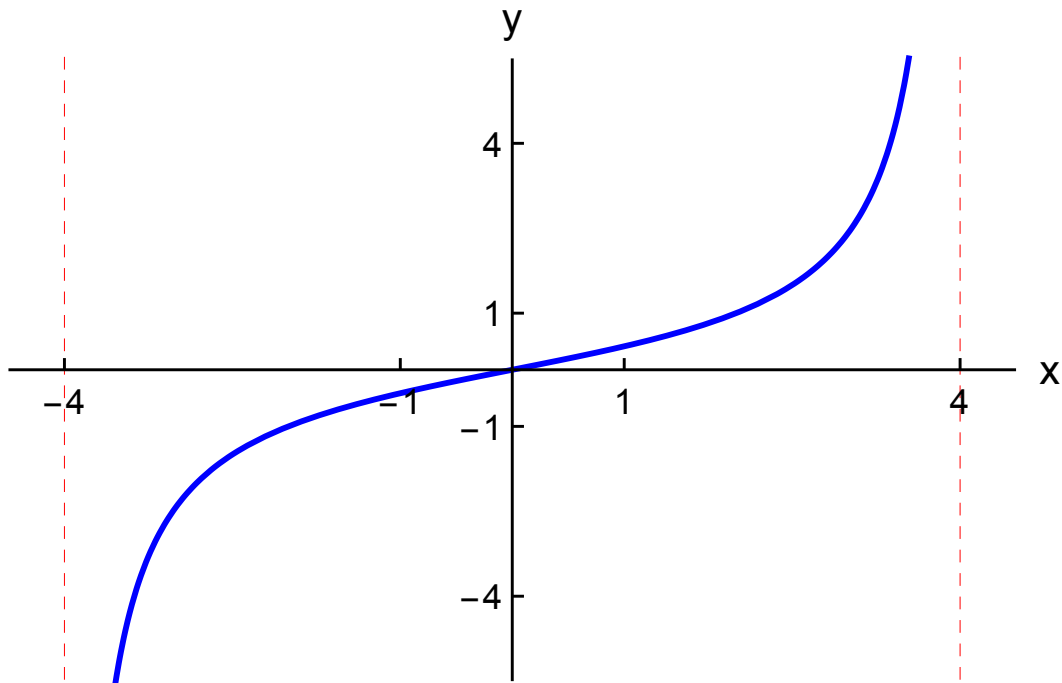


FIGURE 1. Graph of an the invertible function  $F(x)$  along with its vertical asymptotes at  $x = -4$  and  $x = 4$ .