



Southeastern Oklahoma  
State University



**YOUR FUTURE STARTS HERE**



# WELCOME TO **TEXOMA'S UNIVERSITY!**

As the 21st President of Southeastern Oklahoma State University, I'm pleased you're interested in attending Southeastern and exploring the many options that our university presents for pursuing your degree. With our dedicated faculty and staff across so many majors and disciplines, there's something at Southeastern for everyone.

**Your Future Starts Here!** Our campus is vibrant and growing rapidly, with abundant student services and opportunities. In this book, you will learn more about the many resources available to support you on your educational journey at the fastest-growing university in our region.

We're growing every day, and we want you come along with us in one of the most exciting times in your life.

Dr. Thomas W. Newsom  
-President

# YOUR FUTURE STARTS HERE

Southeastern Oklahoma State University first opened in 1909 as Southeastern State Normal School in Durant, Oklahoma. The original purpose of Southeastern was the education of teachers for the public schools of Oklahoma. Over its 100+ year history, Southeastern has grown into a public four-year institution with an average enrollment of more than 4,800 students and offers both undergraduate and graduate degree programs. Southeastern is one of six institutions in the Regional University System of Oklahoma. **Southeastern is the fastest-growing university in Oklahoma over the last 10 years according to the Oklahoma State Regents of Higher Education.**



**President:** Dr. Thomas Newsom

**Founded:** 1909

**Main Campus:** Durant, OK

**Enrollment:** 5,376 (Fall 2022)

**Colors:** Royal Blue & Gold

**Athletics:** NCAA Division II

**Nickname:** Savage Storm

**Mascot:** Bolt the Bison

## Outreach Sites & Locations

McCurtain County branch campus (Idabel, OK)  
Murray State College at Ardmore (Ardmore, OK)  
Eastern Oklahoma State College (McAlester, OK)  
Tinker Air Force Base & Rose State College (Midwest City, OK)  
Grayson College (Denison, TX)

FALL 2018 **4,483**

FALL 2019 **4,824**

FALL 2020 **5,339**

FALL 2021 **5,328**

FALL 2022 **5,376**

Student Enrollment Headcount

# FINANCIAL AID & SCHOLARSHIPS

Southeastern Oklahoma State University takes great pride in offering a quality education at an affordable cost. In fact, Southeastern is the most affordable four-year public institution in the region.

Learn more about estimated attendance costs at [www.SE.edu/cost](http://www.SE.edu/cost).

**LEARN MORE**



**IN-STATE? OUT-OF-STATE?**  
**Its ALL the SAME!**

## FINANCIAL AID

Eighty-two percent of our students receive some type of financial aid as they pursue their academic degrees. There are several types of financial aid available, including scholarships and waivers, grants and loans, and student employment.

One of the most popular programs is the Out-Of-State Tuition Waiver, which is widely used by students from bordering states, including Texas.

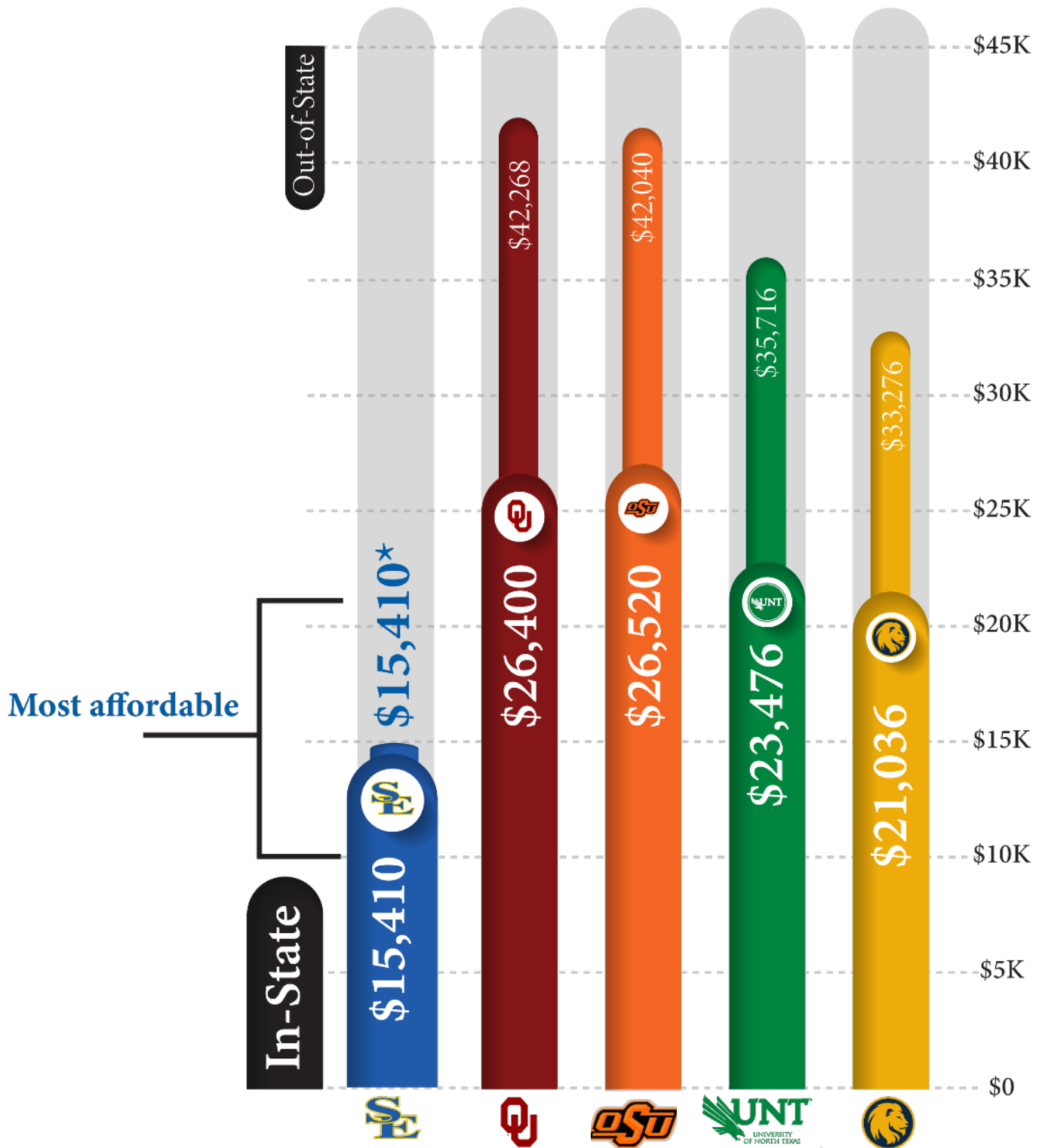
To learn more about financial aid opportunities, visit [www.SE.edu/scholarships](http://www.SE.edu/scholarships) and [www.SE.edu/financial-aid](http://www.SE.edu/financial-aid).



**DID YOU  
KNOW?**

**59% OF SOUTHEASTERN  
UNDERGRADUATE STUDENTS  
GRADUATE WITHOUT ANY DEBT.**

# TOTAL COST PER ACADEMIC YEAR



Total cost includes tuition and fees for full-time enrollment for an academic year, housing and food expenses, books, and supplies for undergraduate students. Costs as published per official university websites as of August 1, 2023 when this publication was printed.

\*All out-of-state students, both undergraduate and graduate, will receive a 100% out-of-state, non resident tuition waiver each semester while eligible to enroll at Southeastern.

# ADMISSION & REQUIREMENTS

We have six types of undergraduate admissions: New Freshman, Transfer, Returning, Adult New Freshman, Concurrent, and Non-Degree Seeking. For a complete list of admissions requirements visit [www.SE.edu/admission](http://www.SE.edu/admission) or **Scan the QR Code** at the bottom of the page.

## FRESHMAN REQUIREMENTS

20

MINIMUM ACT COMPOSITE  
OR EQUIVALENT SAT SCORE  
(COMBINED CRITICAL READING + MATH)

50%

RANK IN UPPER 50% OF YOUR  
GRADUATING CLASS & 2.7  
OVERALL GPA FROM STATE-  
ACCREDITED HIGH SCHOOL

2.7

GPA FROM STATE-ACCREDITED  
HIGH SCHOOL IN THE 15-UNIT  
CORE CURRICULUM

(BE ELIGIBLE TO RETURN TO THE LAST COLLEGE OR UNIVERSITY YOU ATTENDED)

LESS THAN

24

HOURS OF COLLEGE CREDITS  
OFFICIAL TRANSCRIPTS FROM ALL  
COLLEGES/UNIVERSITIES ATTENDED,  
HS TRANSCRIPTS & ACT SCORES  
(IF AVAILABLE)

OR

MORE THAN

24

HOURS OF COLLEGE CREDITS  
OFFICIAL TRANSCRIPTS FROM ALL  
COLLEGES/UNIVERSITIES ATTENDED.

# APPLY NOW!

[www.SE.edu/apply](http://www.SE.edu/apply)



# FIND YOUR PASSION



Southeastern Oklahoma State University provides an environment of academic excellence that enables students to reach their highest potential.

The University, which offers more than 45 degree programs, is nationally known for such fields of study as Aviation, Elementary Education, Sciences, Business, and Occupational Safety and Health. Our dedicated faculty are here to help develop students to become leaders and have successful careers. With an 18:1 student-to-faculty ratio, our faculty will give you the attention you deserve in the classroom.

Southeastern is a member of the Oklahoma System of Higher Education and its accredited by the Higher Learning Commission, Association to Advance Collegiate Schools of Business International, National Association of Schools of Music, and the Council for the Accreditation of Educator Preparation.

Southeastern is composed of four schools - School of Arts and Sciences, John Massey School of Business, School of Education and Behavioral Sciences, and School of Graduate and University Studies.

For more information about our degrees and majors, visit [www.SE.edu/academics](http://www.SE.edu/academics).

## ART, COMMUNICATION, & THEATRE

- **Art**
  - Studio
  - Art Teacher Education
  - Graphic Design & Visual Media
- **Communication**
  - Leadership Studies
  - Media Studies
    - Advertising/Public Relations
    - Broadcasting
    - Journalism
  - Organizational & Strategic Communication
- **Theatre**
  - Integrated Studies of Performance
  - Technical Theatre Design
  - Arts Administration

## BEHAVIORAL SCIENCES

- **Criminal Justice**
- **Early Intervention & Childhood Development**
- **Psychology**
- **Sociology**

## BIOLOGICAL SCIENCES

- **Biology**
  - Biological Health Science
  - Botany
  - Zoology
- **Fisheries & Wildlife Science**
- **Pre-Professional Studies**



Scan to see  
**GRADUATE  
PROGRAMS**

## CHEMISTRY, COMPUTER, & PHYSICAL SCIENCES

- **Chemistry**
  - Biochemical Technology
  - Chemistry
  - Medical Sciences
  - Professional Chemist
- **Computer Information Systems**
- **Computer Science**
- **Pre-Professional Studies**

## EDUCATIONAL INSTRUCTION & LEADERSHIP

- **Early Childhood Education**
- **Elementary Education**

## ENGLISH, HUMANITIES, & LANGUAGES

- **English**
- **English Education**
- **English with a Writing Emphasis**
- **Liberal & Applied Studies**

## JOHN MASSEY SCHOOL OF BUSINESS

- **Accounting**
- **Aviation Management**
  - Business
  - Maintenance
  - Production & Operations
  - Safety
  - Security
- **Aviation - Professional Pilot**
- **Finance**
- **General Business**
- **Management**
  - Hospitality Management
  - Management
- **Marketing**
- **Occupational Safety & Health**



## **KINESIOLOGY**

- **Health & Human Performance**
- **Health & Physical Education**
- **Recreation Sports Management**
  - Business
  - Sport Studies

## **MATHEMATICS**

- **Mathematics**
- **Mathematics Education**

## **MUSIC**

- **Music**
- **Music Education**
  - Instrumental
  - Piano/Vocal
  - Vocal
- **Music Performance**
  - Instrumental
  - Vocal

## **NURSING & ALLIED HEALTH**

**COMING SOON!**

## **SOCIAL SCIENCES**

- **History**
  - History
  - Social Studies Education
- **Political Science**

## **PRE-PROFESSIONAL STUDIES**

- **Pre-Dental Hygiene**
- **Pre-Dentistry**
- **Pre-Dietetics**
- **Pre-Engineering**
- **Pre-Law**
- **Pre-Medicine**
- **Pre-Nursing**
- **Pre-Occupational Therapy**
- **Pre-Optometry**
- **Pre-Pharmacy**
- **Pre-Physical Therapy**
- **Pre-Physician's Associate Program**
- **Pre-Veterinarian Medicine**

**FIND YOUR MAJOR**

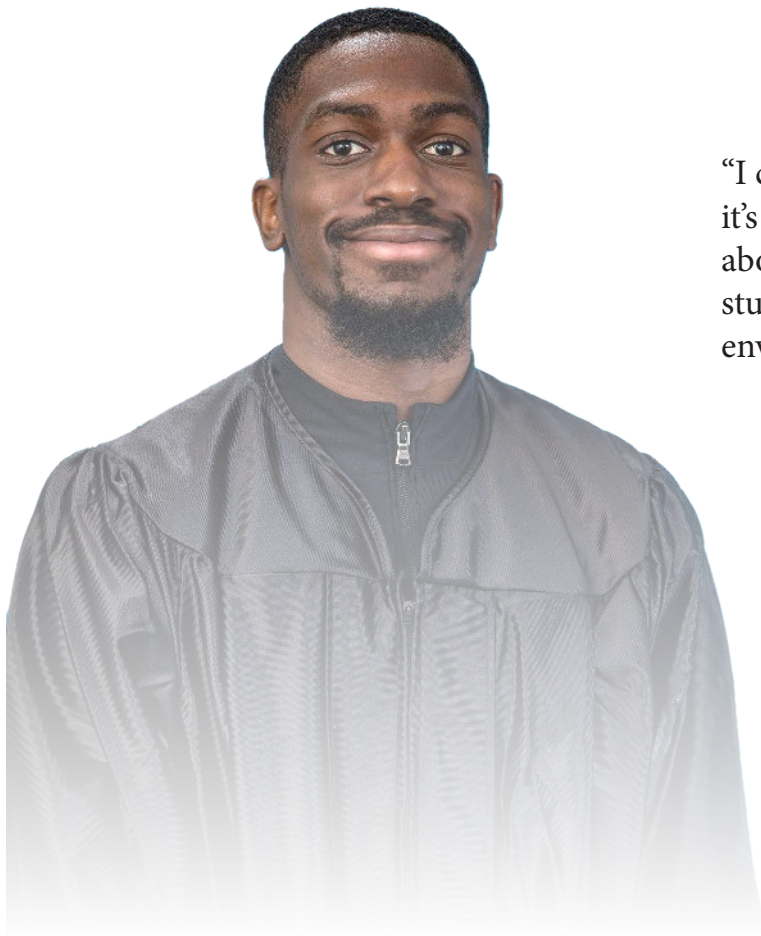
“I would tell a new student to not be afraid to try it all and find out what they are truly passionate about. I decided to go in a different direction than I had originally planned, all because I took a class I knew nothing about and fell in love with it. You never know what will truly make your heart happy until you try it.

After graduation, I plan to attend graduate school at Southeastern to complete my Masters in Technology. Beyond that, I will pursue a Ph.D. and eventually start research of my own.”

## **Delanie Cooper**

**Colbert, OK**

**Biology Health Sciences Graduate**



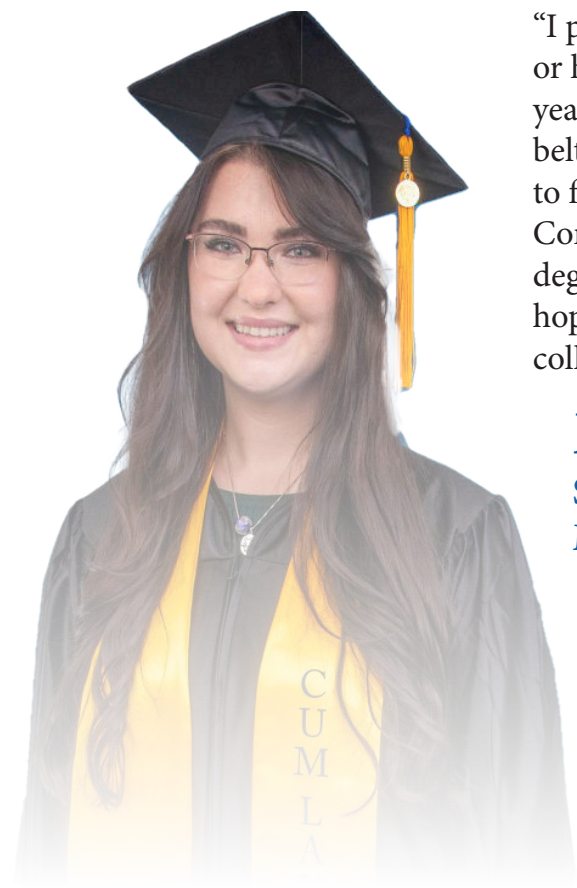
“I chose to attend Southeastern because it’s a community-based school that’s all about education and helping all their students. And the campus has a family environment that I’m truly thankful for.”

## **Katrell Blakely**

**Mesquite, TX**

**Masters in Sports Administration**

# GRADUATE STORIES



“I plan to teach either middle school and/or high school band. When I have a few years of teaching experience under my belt, I will pursue my master’s/doctorate to further my education in Instrumental Conducting Studies. After earning those degrees and many years of teaching, I hope to to be the Director of Bands at a college.”

**Mackenzie Mobley**

Sanger, TX

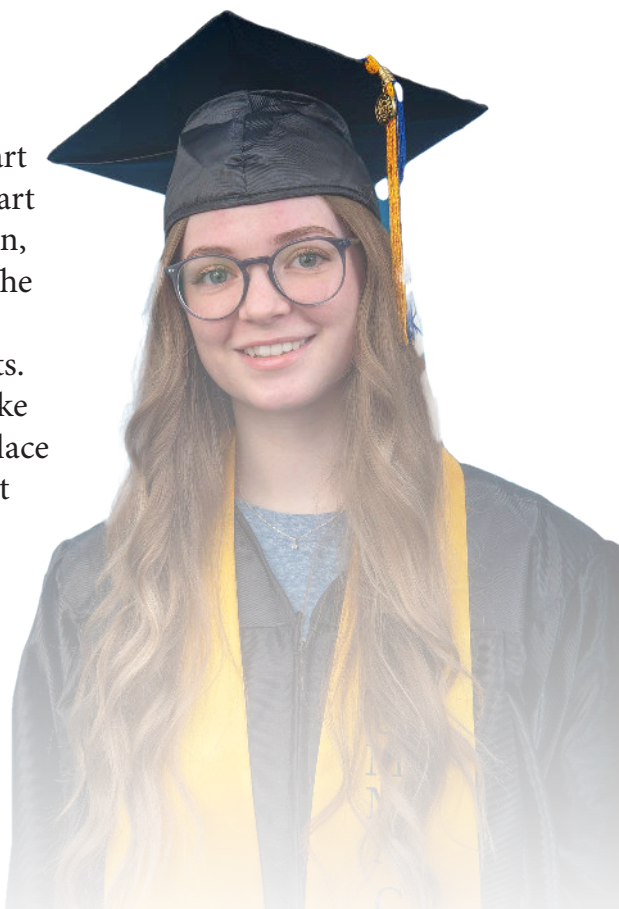
Music Education Graduate

“If I were to offer advice to incoming art students, I would say take a variety of art classes. If you mainly do graphic design, try out a painting class or vice versa. The extra skills will help you expand your portfolio and creativity in your projects. Do not be afraid to experiment and take risks with your work, this is the best place to do it. All of the instructors in the art department are eager to help you.”

**Lauren Cathey**

Durant, OK

Graphic Design Graduate

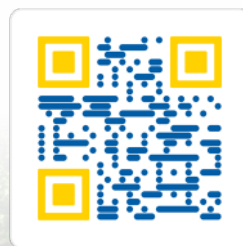


# FIND YOUR HOME



Living on campus is one of the best ways to be engaged in the Southeastern community. There are four residence halls on campus, including Choctaw Hall, Chickasaw Hall, North Hall and Shearer Hall & Suites.

LEARN MORE ABOUT  
HOUSING & RESIDENCE LIFE  
[WWW.SE.EDU/HRL](http://WWW.SE.EDU/HRL)





## SHEARER HALL & SUITES



## CHICKASAW, CHOCTAW & NORTH HALL



### CONVENIENCE

When you live on campus, you don't have to travel far to make it to class on time, shop at the bookstore, or enjoy a meal. Living on campus is a cost-effective way to stay close to the resources you need.



### SOCIAL

One of the easiest ways to meet new people and make friends is by living in a residence hall. The Office of Residence Life, along with each residence hall, hosts year-round events for students to engage with other students who have similar interests



### ACADEMICS

According to research, students who live on campus have better GPAs and graduation rates. Not only do our residence halls offer study lounges, but you will be just a short walk away from the library, computer labs and other academic resources on campus.



# FIND YOUR SAVAGE STORM PRIDE



**Men:** Baseball, Basketball, Football, Golf, Rodeo, Tennis

**Women:** Basketball, Cross Country, Golf, Rodeo, Softball, Tennis, Track and Field, Volleyball



**DID YOU KNOW?**

SOUTHEASTERN HAS EARNED NATIONAL CHAMPIONSHIPS IN BASEBALL AND RODEO COMPETITION.

[WWW.GOSOUTHEASTERN.COM](http://WWW.GOSOUTHEASTERN.COM)

# FIND YOUR WELLNESS



## STUDENT HEALTH SERVICES

All currently enrolled students are eligible with a valid SE student ID. Services provided to distance learning students are limited to licensure. Inquire about what we can do for you!



## COUNSELING CENTER

When students need an objective, caring listener who is knowledgeable about human behavior, the Counseling Center is the place to go. There is nothing mysterious about the counseling process. Counseling is a collaborative process which involves the development of an unique, confidential, helping relationship.

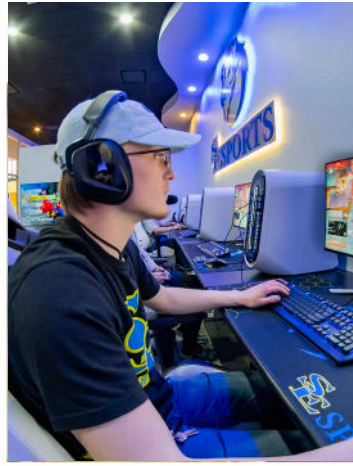


## WELLNESS CENTER

Whether you're hitting the weight machines, shooting hoops, or going for a walk on our track, there is something for everyone at our Wellness Center.



[WWW.SE.EDU/STUDENT-WELLNESS/](http://WWW.SE.EDU/STUDENT-WELLNESS/)



# FIND YOUR PLACE

Attending Southeastern is more than time spent in the classroom. Finding your place is about how you engage in class and in our campus culture. The easiest way to get involved with the Southeastern community is to join one of our 70+ Student Organizations.

There are many opportunities for campus involvement, from Greek life to our Wildlife Fisheries Club. To view the organizations currently at Southeastern, visit [www.SE.edu/student-organizations](http://www.SE.edu/student-organizations).



**DID YOU KNOW?**

IF YOU HAVE A PASSION OR INTEREST, YOU CAN TURN IT INTO A RECOGNIZED ORGANIZATION ON CAMPUS!





## DID YOU KNOW?

SUPERSTAR REBA MCENTIRE GRADUATED FROM SOUTHEASTERN IN 1976 WITH A DEGREE IN ELEMENTARY EDUCATION. SHE WAS A MEMBER OF THE CHORVETTES VOCAL GROUP.

70+ STUDENT  
**ORGANIZATIONS**

59 **COUNTRIES**

40 **STATES**



# FIND YOUR RESOURCES

## **STUDENT WELLNESS SERVICES**

Southeastern offers Durant campus students free health, counseling and fitness services.

[www.SE.edu/student-wellness](http://www.SE.edu/student-wellness)

## **COUNSELING**

The Counseling Center offers several types of sessions, which include individual, group, and couples counseling.

[www.SE.edu/counseling](http://www.SE.edu/counseling)

## **CENTER FOR STUDENT SUCCESS**

The Center for Student Success houses the academic Advising Center, the Learning Center, Freshmen Programs, and the Native American Institute. Students can expect:

- Help with selecting your classes and choosing your major
- Courses and tutoring options to help you excel in English, math, and reading skills
- Award ceremonies for the Top 10 Freshmen students and annual Freshmen Success Reception

## **LIBRARY**

The Henry G. Bennett Memorial Library provides materials and resources you need to help you succeed. Explore our databases, online resources, and thousands of books and publications to help you on your journey to success.

[www.SE.edu/library](http://www.SE.edu/library)

## **NATIVE AMERICAN INSTITUTE**

The Native American Institute is dedicated to the support of our Native students' academic and professional success, tribal partnerships, and community-wide exposure.

[www.SE.edu/native-american](http://www.SE.edu/native-american)

## **Office of Disability Services**

The Office of Disability Services offers:

- Academic Accommodations
- Housing Accommodations
- Employee Accommodations

Anyone interested in receiving disability accommodations should contact

[disabilityservices@se.edu](mailto:disabilityservices@se.edu)

# ABOUT DURANT



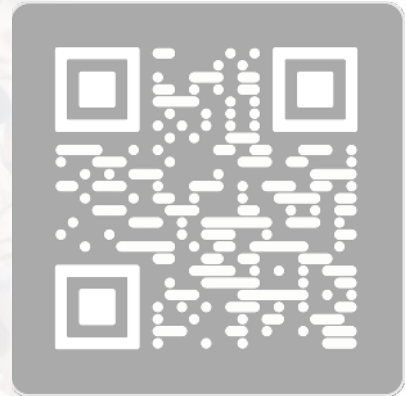
With a population of 19,088, Durant offers the benefits of small-town living with the big city a short drive away.

The city of Durant is located just 20 miles north of the Red River (Texas), 90 miles north of the Dallas- Fort Worth Metroplex, and 150 miles southeast of Oklahoma City. Situated only 15 miles from Durant is beautiful Lake Texoma.

Durant is home to the headquarters of the Choctaw Nation of Oklahoma. Among the Nation's many enterprises is the Choctaw Casino & Resort, which offers lodging, dining, and other entertainment options. Its Grand Theater hosts national entertainment acts.

One of the largest events in Durant is The Magnolia Festival, which is held annually in the spring. The Festival is packed with family fun, including a rodeo, carnival, live entertainment, unique shopping booths, pageants, food vendors, fireworks and 5K Run.

Each summer, Southeastern Oklahoma State University hosts the Oklahoma Shakespearean Festival, which attracts visitors from across the country. Downtown Durant is bustling with activity through the efforts of the Durant Main Street Program and Durant Chamber of Commerce.



# FOLLOW THE STORM

f X @SoutheasternOfficial

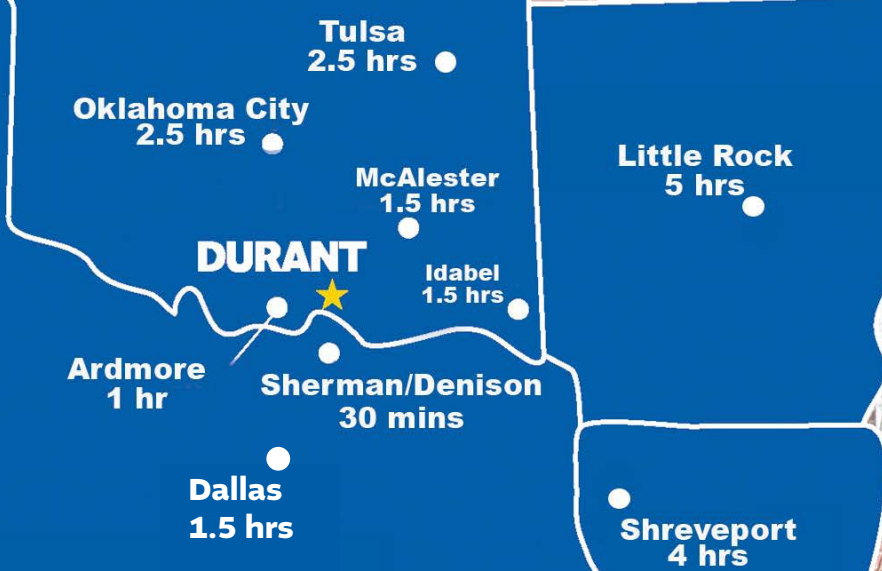
**SCHEDULE YOUR TOUR TODAY!**

**Campus visits** are the best way to get an in-depth feel for life at Southeastern. The campus tour provides a great opportunity to meet current students, faculty and staff, tour our Residence Halls, and get answers to your questions about living and learning at Southeastern. To schedule an in person or virtual tour, visit [www.SE.edu/visit](http://www.SE.edu/visit), scan the QR Code OR Call Admissions & Recruitment to schedule.

## CONTACT THE OFFICE OF ADMISSIONS & RECRUITMENT:

(580) 745- 2060 | [recruitment@se.edu](mailto:recruitment@se.edu) |  
Welcome Center | 425 W. University Blvd. | Durant, OK

## TEXOMA'S UNIVERSITY™



This publication, printed by (office name) is issued by Southeastern Oklahoma State University as authorized by the Regional University System of Oklahoma (RUSO) board. 5,000 copies have been prepared and distributed at a cost of \$4,252.68.